





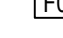
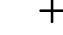


Issue	Description	Date
	ISSUE FOR REVIEW	31/05/2023
	ISSUE FOR DA	30/06/2023
	ISSUED FOR RFI	22/02/2024
	ISSUED FOR RFI	21/03/2024

LEGEND

- | | |
|---|--|
|  | EXTENT OF WORKS |
|  | SITE BOUNDARY |
|  | EXISTING TREE TO BE RETAINED
AND PROTECTED |
|  | PROPOSED TREE |
|  | MASS PLANTING TYPE 01/02 |
|  | TURF AREA |
|  | COFFEE TABLE SET |
| + RL | RELATIVE LEVELS |
|  | WALL TYPE 02
SANDSTONE LOGS/ QUARRY BLOCK
1500mm L x 500mm W x 500mm H |

Civil and Structural Engineer

FRASERS PROPERTY
Level 3, Building C, 1 Homebush Bay Drive, Rhodes, NSW 2138.
+612 9767 2000



Group GSA Pty Ltd ABN 76 002 113 779
Level 7, 80 William St East Sydney NSW
Australia 2011 www.groupgsa.com

+612 9361 4144 F +612 9332 3458
chitecture interior design urban design landscape
m architect M. Sheldon 3990

Project Title

Shell Cove
BOAT HARBOUR - BMF

Drawing Title

SHELL COVE
BOAT HARBOUR - BMF
SITE PLAN GROUND FLOOR
scale 1:250@A1

rawing created (date) 22/05/2023

y BP

lotted and checked by FR

erified	FR
---------	----

pproved FR

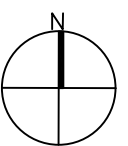
Drawing No	Issue
13294-L-BMF-2000 D	

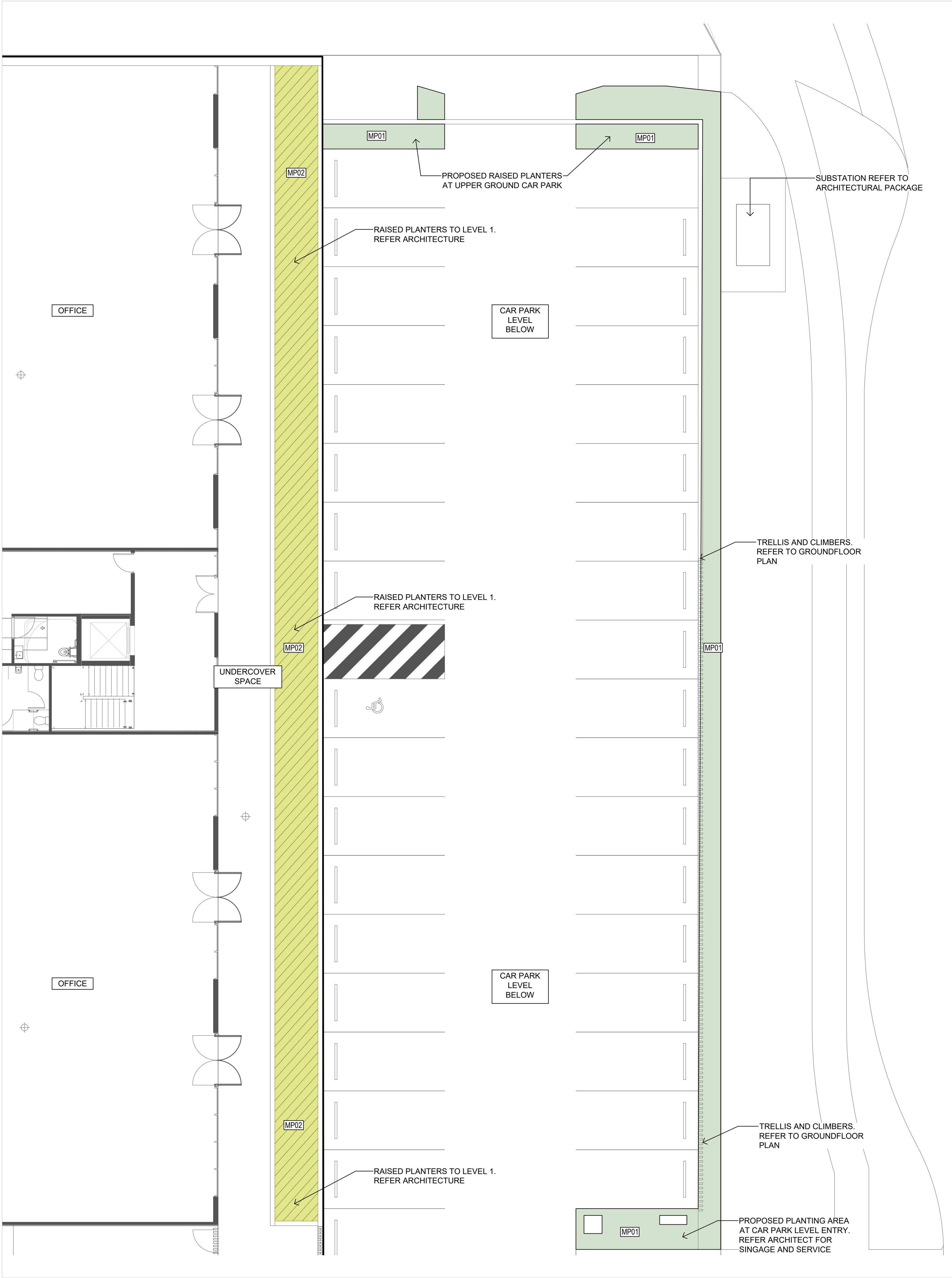
file	Plot Date
113294 Shell Cove	\$DATES

This drawing is the copyright of Group GSA Pty Ltd and may not be altered, reproduced or transmitted in any form or by any means in part or in whole without the written permission of Group GSA Pty Ltd.

All levels and dimensions are to be checked and verified on site prior to the commencement of any work, making shop drawings or fabrication of components.

Do not scale drawings. Use figured Dimensions.





Amendments		
Issue	Description	Date
A	ISSUE FOR REVIEW	30/05/2023
B	ISSUE FOR DA	30/06/2023

LEGEND

- EXTENT OF WORKS
- SITE BOUNDARY
- EXISTING TREE TO BE RETAINED AND PROTECTED
- PROPOSED TREE
- MASS PLANTING TYPE 01/02
- TURF AREA
- COFFEE TABLE SET
- + RL RELATIVE LEVELS
- WALL TYPE 02 SANDSTONE LOGS/ QUARRY BLOCK 1500mm L x 500mm W x 500mm H

Civil and Structural Engineer

Client
FRASERS PROPERTY
Level 3, Bulling C. 1 Homebush Bay Drive, Rhodes, NSW 2138.
T: +612 9767 2000



GROUP GSA
Group GSA Pty Ltd ABN 76 002 113 779
Level 7, 80 William St East Sydney NSW
Australia 2011 www.groupgsa.com
T +612 9361 4144 F +612 9332 3458
architecture interior design urban design landscape
nom architect M. Sheldon 3990

Project Title
**Shell Cove
BOAT HARBOUR - BMF**

Drawing Title
**SHELL COVE
BOAT HARBOUR - BMF
LEVEL 1 PLAN**
Scale

Drawing created (date) 22/05/2023
By BP
Plotted and checked by FR
Verified FR
Approved FR
Drawing No Issue
13294-L- BMF-2001 B
File Plot Date
P113294 Shell Cove SDATES

Rsfb	Rhagodia spinescens Flat Bush	Salt Bush	0.1 x 1.0	150mm	4/sqm
MASS PLANTING (MIX TYPE 2)					
C'CI'	Casuarina 'Cousin It'	She-oak	0.15 X 1.0	150mm	6/sqm
Bs'BC'	Banksia spinulosa 'Birthday Candles'	Banksia	0.5 X 1.0	150mm	4/sqm

This drawing is the copyright of Group GSA Pty Ltd and may not be altered, reproduced or transmitted in any form or by any means in part or in whole without the written permission of Group GSA Pty Ltd.
All levels and dimensions are to be checked and verified on site prior to the commencement of any work, making of shop drawings or fabrication of components.
Do not scale drawings. Use figured Dimensions.



Amendments		
Issue	Description	Date
A	ISSUE FOR REVIEW	30/05/2023
B	ISSUE FOR DA	30/06/2023
C	ISSUED FOR RFI	22/02/2024
D	ISSUED FOR RFI	21/03/2024

LEGEND

EXTENT OF WORKS

SITE BOUNDARY

EXISTING TREE TO BE RETAINED AND PROTECTED

PROPOSED TREE

MP01MP02

MASS PLANTING TYPE 01/02

TURF AREA

F01

COFFEE TABLE SET

+ RL

RELATIVE LEVELS

ST

WALL TYPE 02
SANDSTONE LOGS/ QUARRY BLOCKS
1500mm L x 500mm W x 500mm H

Civil and Structural Engineer

Client
FRASERS PROPERTY
Level 3, Bulling C. 1 Homebush Bay Drive, Rhodes, NSW 2138.
T: +612 9767 2000



GROUP GSA
Group GSA Pty Ltd ABN 76 002 113 779
Level 7, 80 William St East Sydney NSW
Australia 2011 www.groupgsa.com
T +612 9361 4144 F +612 9332 3458
architecture interior design urban design landscape
nom architect M. Sheldon 3990

Project Title
**Shell Cove
BOAT HARBOUR - BMF**

Drawing Title
**SHELL COVE
BOAT HARBOUR - BMF
ZOOM-IN PLAN**

Scale 1:100@A1

Drawing created (date) 22/05/2023

By BP

Plotted and checked by FR

Verified FR

Approved FR

Drawing No Issue
13294-L- BMF-2002 D

File Plot Date
P113294 Shell Cove SDATES

This drawing is the copyright of Group GSA Pty Ltd and may not be altered, reproduced or transmitted in any form or by any means in part or in whole without the written permission of Group GSA Pty Ltd. All levels and dimensions are to be checked and verified on site prior to the commencement of any work, making of shop drawings or fabrication of components. Do not scale drawings. Use figured Dimensions.

BMF - PLANT SCHEDULE					
CODE	BOTANIC NAME	COMMON NAME	MATURE SIZE (H x W) m	INSTALLATION SIZE	QUANTITY
TREES					
Bi	<i>Banksia integrifolia</i>	Coast Banksia	15 x 6	200Lt	3
Er	<i>Eucalyptus robusta</i>	Swamp messmate	15 x 6	200Lt	2
Eb	<i>Eucalyptus botryoides</i>	Bangalay	15 x 8	200Lt	6
MASS PLANTING (MIX TYPE 1)					
C'AR'	<i>Carpobrotus 'Aussie Rambler'</i>	Pigface	0.3 x 2	150mm	4/sqm
Dc	<i>Dianella caerulea</i>	Blue Flax-Lily	0.3 x 0.4	150mm	6/sqm
Gmt	<i>Grevillea Mt Tamboritha</i>	Cats Claw	0.5 x 1.5	150mm	4/sqm
Hs	<i>Hibbertia scandens</i>	Golden Guinea Vine	0.8 x 0.4	150mm	4/sqm
Wf'S'	<i>Westringia fruticosa 'Smokey'</i>	Coast Romery	0.4 x 0.4	tubes	8/sqm
In	<i>Isolepis nodosa</i>	Isolepis	0.8 x 0.8	150mm	8/sqm
Mp	<i>Myoporum parvifolium</i>	Yareena	0.1 x 1.0	150mm	4/sqm
Rstb	<i>Rhagodia spinescens</i>	Salt Bush	0.1 x 1.0	150mm	4/sqm
MASS PLANTING (MIX TYPE 2)					
C'CI'	<i>Casuarina 'Cousin It'</i>	She-oak	0.15 X 1.0	150mm	6/sqm
Bs'BC'	<i>Banksia spinulosa 'Birthday Candles'</i>	Banksia	0.5 X 1.0	150mm	4/sqm
C'AR'	<i>Carpobrotus 'Aussie Rambler'</i>	Pig Face	0.2 X 2.0	150mm	4/sqm
CLIMBERS					
	<i>Pandorea pandorana</i>	Wonga Wonga Vine	8 X 3	800mm	SPACED